

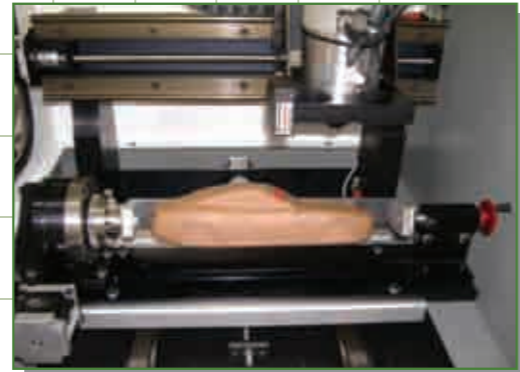

**DENFORD**

# Router Accessories

EasySCAN 3D  
3D SCANNING ATTACHMENT & SOFTWARE FOR DENFORD ROUTERS



1. Select a model



2. Scan the model



3. Manipulate scan data



4. Manufacture on a Denford CNC Router



5. Completed model

Denford's EasySCAN 3D Scanner attachment has full 360 degree scanning capability when used in conjunction with Denford's Rotary Fixture, and is suitable for use with the entire range of Denford CNC Routers.

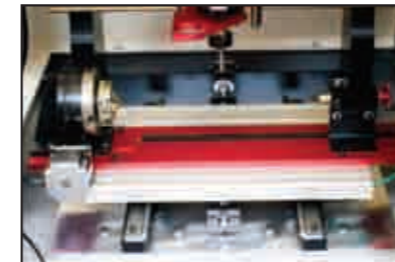
The EasySCAN 3D package incorporates user friendly, wizard based software for scanning, editing and saving 3D models, prior to manufacture on a Denford CNC Router. EasySCAN 3D is ideal for Reverse Engineering applications.

**3D Scanning & Manufacturing Package**  
see page 44 - 45

## Router Accessories

4TH AXIS PROGRAMMABLE ROTARY FIXTURE/CAR MANUFACTURING FIXTURE  
VAC PADS & BEDS

The Denford 4th axis programmable rotary fixture is designed for use with the Denford range of CNC Routers. It allows 360 degree rotation of material and comes complete with its own software - QuickCAM 4D Milling.



### 4th Axis Programmable Rotary Fixture

for use with Compact 1000, Router 2600 & Vertical Router.

### QUICKCAM 4D MILLING SOFTWARE

(Supplied **FREE** with the Denford 4th Axis Programmable Rotary Fixture.)

An easy to use, wizard based CAM package specifically designed for use with the Denford 4th axis programmable rotary fixture. QuickCAM 4D Milling imports 3D files from most 3D CAD packages and converts these into 4th axis CNC program data for output to the range of Denford CNC Routers. Users are guided through a series of simple steps, defining billet size, model orientation, machining strategy and axis of rotation before generating the appropriate CNC output file.

### QUICKCAM 4D MILLING FEATURES

True 3Dimensional model-making capabilities. Seamless integration with VR CNC Milling software. Circular, spiral and linear machining strategies. User definable limits allow for workholding avoidance. Supports both roughing and finishing paths. Resize, orientate and centre the model. Autoscale of model to fit the workpiece.

### SUPPORTED OUTPUT FORMATS

CNC controllers for Denford CNC Routers.

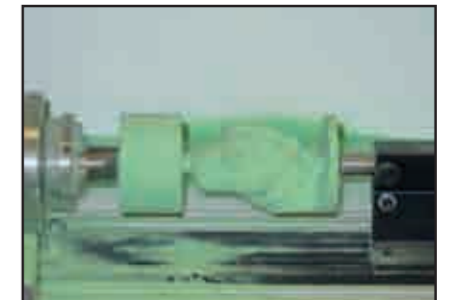
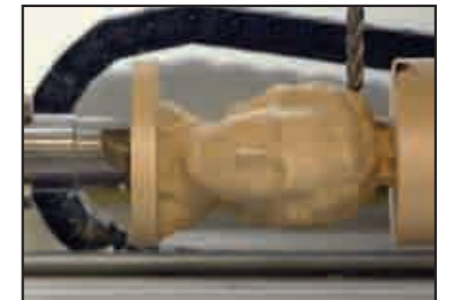
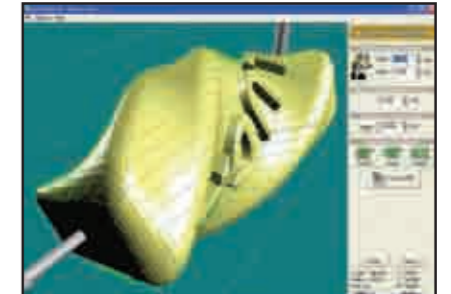
### SUPPORTED INPUT FORMATS

3D Stereo Lithography \*(STL) files  
\*Used by Pro/DESKTOP, ArtCAM, Autodesk Inventor and Solid Edge, Autodesk 3D Studio Files (3DS), SolidWorks.

### SYSTEM REQUIREMENTS

IBM or 100% Compatible PC, Pentium III, 1Ghz, 512MB RAM, 200MB Free Hard Disk Space, Microsoft Windows XP/NT/2000 and later, CD-ROM Drive, Floppy Drive, OpenGL 3D Accelerator Graphics Card with 128MB RAM supporting at least 1024 x 768 screen resolution. CNC Machines require USB Connection.\*

\*N.B. Machines cannot be run from 64-Bit Operating Systems



Get help, advice and share designs online  
[www.denfordata.com/bb](http://www.denfordata.com/bb)