



QuickCAM 2D Design

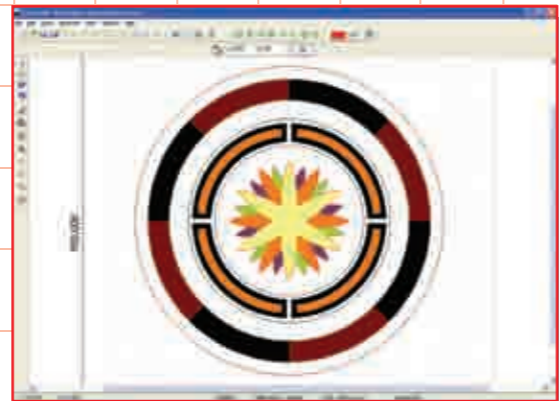
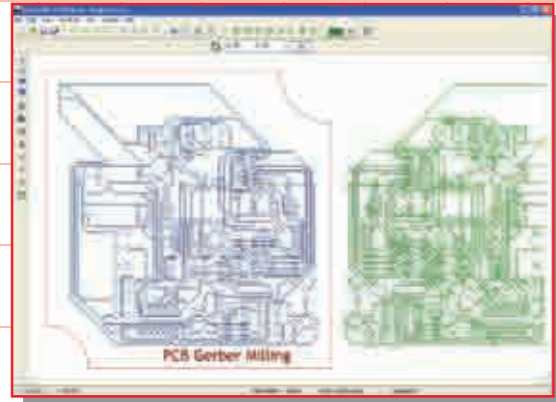
2D DESIGN & MANUFACTURE SOFTWARE



QuickCAM 2D Design

2D DESIGN & MANUFACTURE SOFTWARE

QuickCAM 2D Design is an advanced, yet simple to use, wizard based 2D CAD/CAM package. You can create designs quickly and accurately, then run the CAM wizard to create CNC machine toolpaths. It features various import options to allow images, PCB's and designs from other CAD packages to be manufactured. The customisable post processor and advanced printing facilities provide outputs to most desktop CNC and laser machines.



CAD DRAWING FEATURES

Shape Creation:
Line, Polyline, Rectangle, Curve/Spline, Circle, Arc, Point, Polygon, Ellipse, Text, Multiple Line Text with Justification, Hatch, Offset Path, Image Outline (Contrast Edge Detection).

Drawing Help:
Customisable Grid Size, Grid Snap, Object Nudge, Polar Snap, Absolute and Relative Co-ordinate Entry, Shape Property Editors, Fast Drawing Navigation.
Snap Modes: End, Middle, Nearest, Intersection, Tangent.

Shape Modification:
Unlimited Undo and Redo, Move, Scale, Rotate, Mirror, Copy, Paste, Join, Explode, Group and Ungroup multiple shapes, Apply colour to any shape, Modify shape using grips or by property editor, Boolean shape operations: Union, Intersect, Split, Subtract, Rectangular Repeat, Circular Repeat.

IMPORT/EXPORT FEATURES

Import
Raster Image - JPG,BMP,ICO,EMF,WMF.
Clipboard Vector paste (eg from CorelDraw)
Gerber (RS274X) - PCB designs are imported and converted into polylines.
Autocad drawings (DWG,DXF) - drawings can be imported (Autocad versions 2.5 through to 2000).
Vector Image Clipart - WMF, EMF.
Font - any TrueType Font (TTF) can be imported then used by the software.

Export
Autocad DXF versions 10 through to 2000.

Custom file format for loading and saving design, machining plans and images.

CAM WIZARD FEATURES

Material selector - customisable materials define cutting feeds, speeds and cutting depth.
Machining plan - easily create and rearrange any number of machining plans from the following types:

Follow - follow the shapes path ideal for Engraving and Laser Cutting.

Inside Offset - offset cutter path inside shape(s) with automatic island recognition.

Outside Offset - offset cutter path outside shape(s).

Area Clearance - multiple offset cutter paths inside the shape(s).

Raster Clearance - create a raster path at any angle to clear the inside of shape(s).

Drill - select point, circle or arc centres for drilling operations.

Automatic island recognition selects whether shapes within shapes are machined on the inside or the outside. Each island's level (ie, inside or outside) can be altered manually.

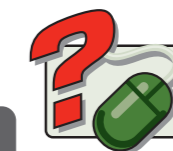
Post Process - final tool path can be simulated quickly in 2D then posted (G code) to a variety of machines via the customisable post processor.

Powerful printing features allow printed output to be previewed, moved and scaled accurately - making it ideal for use with plotting, engraving and laser cutting devices.

SYSTEM REQUIREMENTS

IBM or 100% Compatible PC, Pentium III, 1Ghz, 512MB RAM, 200MB Free Hard Disk Space, Microsoft Windows XP/NT/2000 and later, CD-ROM Drive, Floppy Drive, OpenGL 3D Accelerator Graphics Card with 128MB RAM supporting at least 1024 x 768 screen resolution.
CNC Machines require USB Connection.*

*N.B. Machines cannot be run from 64-Bit Operating Systems



Get help, advice and share designs online
www.denfordata.com/bb

To get you up and running, Denford also offer a range of CNC Routers, Lasers, Milling Machines and Lathes, together with tooling packages, workholding kits and courseware.

Total Commitment to Manufacturing Technology in Education and Training Worldwide. ISO9001 compliant.

Denford reserves the right to alter machines and software specifications without prior notice. All Denford products are subject to copyright. All brands and products are trademarks or registered trademarks of their respective companies.



CALL NOW T: +44(0)1484 728000

F: +44(0)1484 728100 Email: info@denford.co.uk

Denford Limited, Birds Royd, Brighouse, West Yorkshire HD6 1NB, England