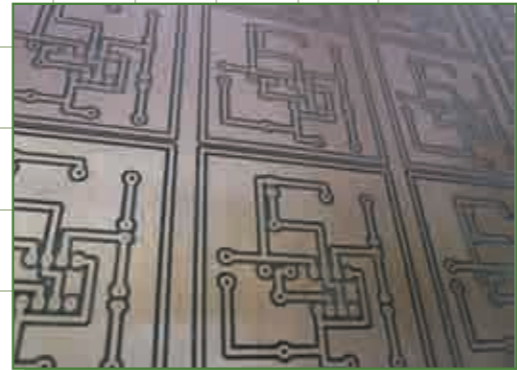



**DENFORD**

# Router Accessories

FLOATING HEAD PCB MANUFACTURE AND ENGRAVING



## PCB Production with a Floating Head

Denford's 'Floating Head' option permits manufacture of PCB's and engraving of uneven surfaces, and is ideal for batch manufacture of PCB boards.

The floating head comes complete with a quick change facility for a swift interchange with the standard issue router motor.

The cutting tool profiles around the outside of the tracks creating an isolation gap. The weight of the spindle motor plunges the cutter into the PCB board, and depth is set by a plastic disc that floats on the material surface. A float up to 5mm is possible using this technology.

Tool changes are a simple process and allow drilling of larger holes.

The floating head is designed for use on Denford's Compact 1000 / Pro and Router 2600 / Pro.



## DUST PRO 100 EXTRACTION UNIT

Denford's Large Capacity Dust Extraction system is a purpose-designed dust control system for use with the Compact 1000/Pro and Router 2600/Pro. It can be used as a stand-alone unit, or incorporated within Denford's Universal Machine Bench, as shown above. The unit is highly effective in removing airborne dust and light particles produced during machining, and is recommended for schools where MDF is regularly used. The unit comes ready to use including a removable / re-usable dust collection bag and separate HEPA filter.



## LARGE FORMAT VACUUM BED

Suitable for use with the Router 2600/Pro, and the Vertical Router, the large format (600 x 400mm) bed is supplied with an external vacuum pump. Suitable for 'blind' machining and 'through' machining when used with sacrificial mat.

Dual-bed option with manifold is available for use with the Vertical Router, details on application.

## Routing Accessories

VAC PADS, VAC BEDS, CAR MANUFACTURING FIXTURE AND CLAMPING KITS

A range of vacuum bed options for clamp-free machining operations.

All these accessories are suitable for use with Denford's range of CNC Routers. The accessories enhance the capabilities of the machines, and enable 2D and 3D designs to be manufactured easily and effectively.



## F1 IN SCHOOLS CAR FIXTURE

The F1 in Schools car manufacturing fixture comes as standard with 2 clamping systems to enable the manufacture of D Type and R Type cars. The fixture clamps directly to the T-slotted table on the Compact 1000 / Pro or Router 2600/Pro and is also suitable for use on the VMC 1300.

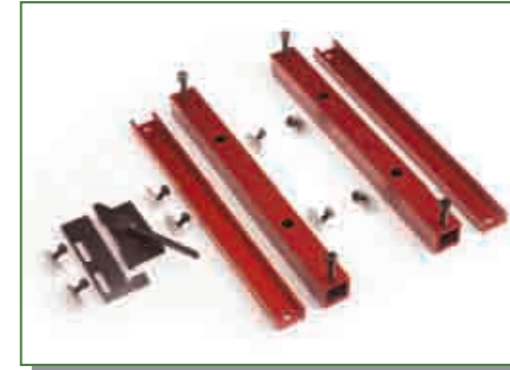


## DUST PRO 50 EXTRACTION UNIT

Particle and dust extraction unit suitable for use with the Compact 1000/Pro and the Router 2600/Pro.

This purpose designed unit is ideal for extraction of airborne dust created during the manufacturing process, and also to vacuum the machine after the cutting process is complete.

The unit comes complete with castors, flexible hose and fittings.



## ADDITIONAL CLAMPING KIT

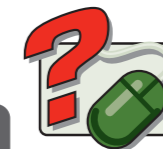
Additional Clamping Kit includes 2 Parallel Clamping Rails with T-Nuts, (allowing the workpiece to be raised from the bed, to permit 'through' machining), 1 additional L Bracket and Lever Clamp with T-Nuts.



## VAC PADS

Vac Pads are suitable for the Compact 1000/Pro and Router 2600 / Pro. The package includes 2 vacuum pads and an integral vacuum pump.

Suitable for 'blind' machining only.



Get help, advice and share designs online  
[www.denfordata.com/bb](http://www.denfordata.com/bb)